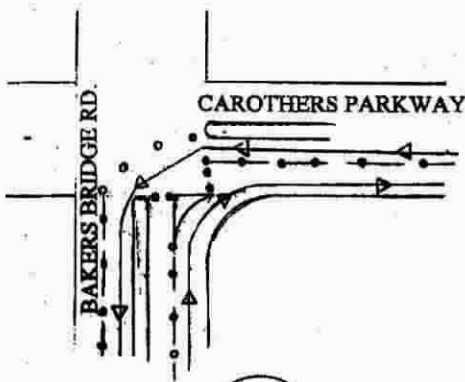
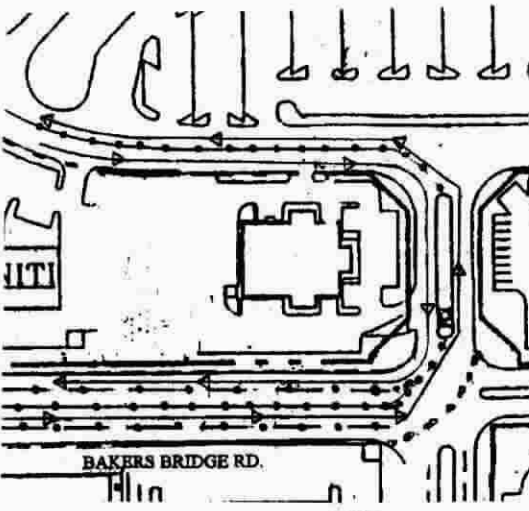
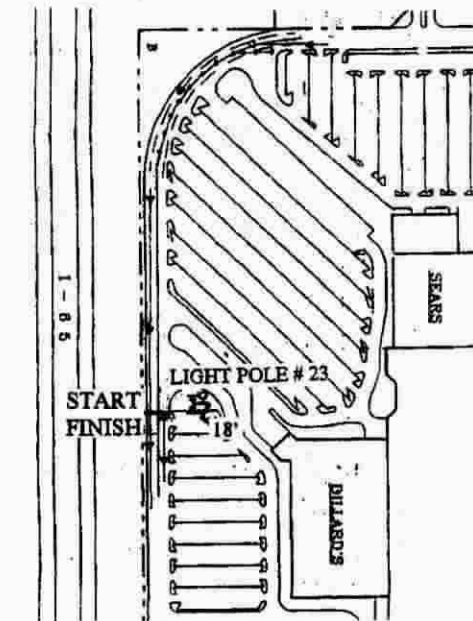


# HABITROT 10K FRANKLIN, TENNESSEE

NOT TO SCALE

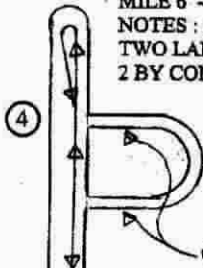


TURN AROUND MEDIAN  
SOUTH END CAROTHERS  
PARKWAY



- START - ON WEST SIDE OF EAST MALL RD., AT SOUTH END OF DILLARDS LOT, 18' NORTH OF LIGHT POLE # 23
- FINISH - OF LIGHT POLE # 23
- MILE 1 - ON NORTH EDGE OF SOUTH MALL RD., JUST BEFORE HARLEY DAVIDSON STORE, 100' BEFORE LIGHT POLE
- MILE 2 - ON SOUTH EDGE OF BAKERS BRIDGE RD., 33' EAST OF END OF BRIDGE WALL
- MILE 3 - AT THE WEST EDGE OF CAROTHERS PKWY., MIDWAY OF A STONE WALL. 43' AFTER A STORM SEWER GRATE
- MILE 4 - AT THE WEST EDGE OF THE NORTHBOUND LANE OF CAROTHERS PKWY., 188' BEFORE CRESCENT CENTER DRIVE
- MILE 5 - AT THE EAST EDGE OF THE SOUTHBOUND LANE OF CAROTHERS PKWY., 79' BEFORE A CONCRETE POST ON THE WEST SIDE AND 91' BEFORE A STORM SEWER GRATE
- MILE 6 - ON THE WEST SIDE OF THE EAST MALL DRIVE 64' SOUTH OF LIGHT POLE # 38

NOTES : ALL POINTS ARE MARKED WITH PK NAILS. RUNNERS ARE RESTRICTED TO WEST TWO LANES OF MALL RD. AT START AND TO EAST TWO LANES OF EAST MALL RD. ON LAP 2 BY CONES. RUNNERS ARE RESTRICTED TO SOUTH MOST LANE GOING OUT, BY CONES, AND SOUTH MOST OF WESTBOUND LANES COMING BACK, BY CONES AND MEDIAN, ON BAKERS BRIDGE RD. RUNNERS ARE RESTRICTED TO WEST MOST LANE GOING OUT, BY CONES, TO EAST LANES FROM TURNING POINT TO SOUTH MOST CRESCENT CENTRE DR. BY MEDIAN AND TO EAST MOST OF SOUTHBOUND LANES, BY CONES FROM SOUTH MOST CRESCENT CENTRE DR. TO BAKERS BRIDGE RD., ON CAROTHERS PKWY



CRESCENT CENTER DR.

